

JOHN OVERTON HIGH SCHOOL

4820 Franklin Road | Nashville, TN 37220 | 615-333-5135



1,935 STUDENTS

10% Asian
20% African American
39% Hispanic/Latino
31% White



163 FACULTY & STAFF



40 COMMUNITY PARTNERS

SERVES GRADES 9-12 IN THE OVERTON CLUSTER

- ☒ Open Enrollment
- ☑ Offers Bus Transportation
- ☒ Offers Before or After Care

ADMINISTRATION

Executive Principal: Dr. Jill Pittman,
jill.pittman@mnps.org
Assistant Principal: Trey Stephens,
james.stephensiii@mnps.org
Academy Coach: Rebecca Farrow,
rebecca.farrow@mnps.org
Family Engagement Specialist: Dr. Emily Workman,
emily.workman@mnps.org
School Board Representative: Rachael Anne Elrod

- schools.mnps.org/john-overton-high-school
- @OvertonMNPS
- facebook.com/johnovertonpto
- @Overtonbobcats

SCHOOL HIGHLIGHTS

- ★ Welcoming international student body
- ★ Wide range of performing arts including marching band, jazz band, orchestra, and theatre.
- ★ Nationally recognized model academies through NCAC (National Career Academy Coalition)
- ★ Over 30 different student clubs, organizations, and activities.

DRESS CODE

No SSA (see website for dress code details)
Clothing must be modest and in good taste.

ACADEMIC PROGRAMS

Cambridge, arts, Academies: Engineering, Health Science, Information Technology, Interdisciplinary Research

FEATURED EXTRACURRICULAR ACTIVITIES

TSSAA Athletics; Award-winning Band & Orchestra program; Latino Achievers; Student Government Associations; Academic Honor Societies.

FEATURED COMMUNITY PARTNERS

Lipscomb University, Vanderbilt University's Interdisciplinary Scientific Research program.
St. Thomas Health supports the Health Science Academy by providing instruction and mentoring

HCA sponsors our Cyber Security club and provides mentoring for girls that are interested in working in the IT field.

Metro Nashville Fire Department's BLAZE program works with students who are interested in learning about a variety of career opportunities

RESOURCES & SUPPORTS

Tutoring, Restorative Justice, mentoring, internships, ACT/SAT Prep, PBIS, family involvement specialist, Advanced Placement Courses, Academies, college counseling, daily personalized learning time, experiential learning, no cost meals

PARENT ORGANIZATION

Tiffany Krech, President
Otownpto@gmail.com
Facebook: John Overton PTO
Instagram: @johnovertonpto



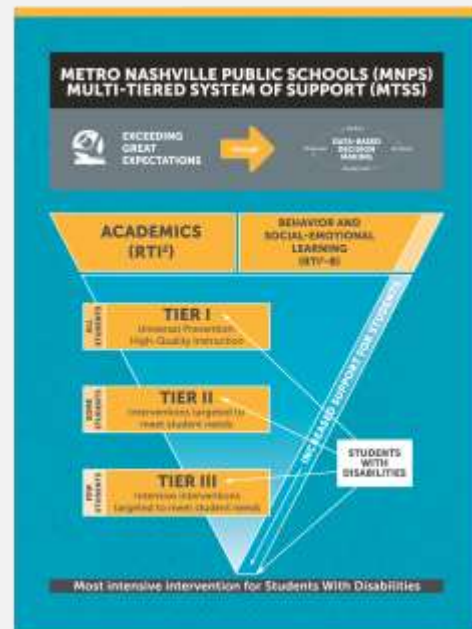
The Metropolitan Nashville Public Schools (MNPS) does not discriminate on the basis of race, religion, creed, sex, gender, gender identity, sexual orientation, national origin, color, age, and/or disability in admission to, access to, or operation of its programs, services, or activities. MNPS does not discriminate in its hiring or employment practices.

MULTI-TIERED SYSTEM OF SUPPORT (MTSS)

Metro Schools knows our students each have a unique set of needs and the teaching and learning in our classrooms must reflect that. Through our Multi-Tiered System of Support (MTSS) framework, educators and administrators have proven tools at their disposal to support a timely and effective response to academic and behavioral needs for each student — meeting the child where they are.

HOW MTSS WORKS

Our school has a dedicated MTSS team, representative of teachers and leaders throughout the building. This team meets to discuss students who may need additional supports and reviews each student's supporting data. Our MTSS data team meets every five weeks to identify students who may need additional supports and interventions. This team monitors students' progress and adjusts plans as needed.



MTSS IN ACTION AT JOHN OVERTON HIGH SCHOOL

Universal Supports for All Students	Targeted Supports and Interventions	Intensive Supports and Interventions
<ul style="list-style-type: none"> • Clear expectations for daily attendance • School-wide positive behavior expectations • Equitable access to rigorous grade-level, standards-based instruction that is culturally responsive and integrates social/emotional development • Inclusive partnerships with families and communities • Consistent school-wide discipline procedures • Physical activity and nutrition services 	<ul style="list-style-type: none"> • Check in/out (The Behavior Education Program) • Read 180 • Math 180 	<ul style="list-style-type: none"> • Behavior Intervention Plan • Small group behavioral skills instruction • Fusion Reading • Language Live • Read 180 • Wilson Reading • Math 180